

Category: Glass Paint

Green Tree Frog



LEVEL
Easy

AGE
8+

Hello it's Joe from Mont Marte. In this lesson we shall be painting a Red Eyed Green Tree Frog on a plate with Mont Marte Glass Paint. So grab your Mont Marte art materials and...

*Keep on
Painting*

Material List

PMHS0015	Mont Marte Glass Paint
BMHS003	Mont Marte Kolinsky Sable Brush Set in Wallet 6pce
MAPL0002	Mont Marte Easy Clean Palette Wood

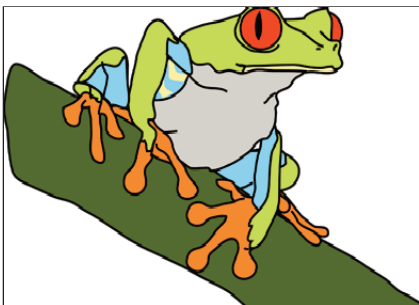
You will also need:

A plate or Glass
Water



Step 1: Preparing the Surface

To make sure the surface is clean, use rubbing alcohol or glass cleaner to wipe off any residue or dust. Alternatively wash your plate or glass in warm soapy water and leave it to dry.



Step 2: Finding and Drawing your Image

Select an image you would like to use. Place behind the glass surface and trace. For opaque surfaces, draw your image on using a 6B Pencil. We have provided the frog image for your reference.



Step 3: Outlining in Black

Once you have prepared your drawing, place your plate or glass on a flat surface and make sure the surface is horizontal while painting to avoid runs. To achieve a Stained Glass effect, outline your painting with the Lamp Black. Paint this on reasonably thick, you can go over it after the paint is dry if the line is not strong enough. You can also create light tones by adding water to the paint and laying in washes.



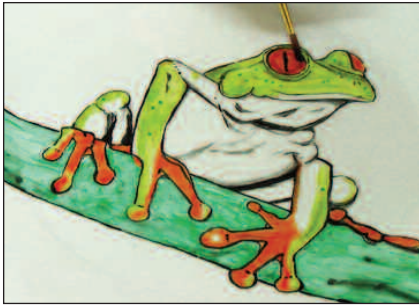
Step 4: Painting the Green

Use a Kolinsky Sable Brush to paint in the Green of the Frog using Green Light first and then the shadows with Olive Green. Then paint in the branch using Viridian.



Joe's Jem

You can layer the paint much like watercolour, try it out and see what great effects you can achieve!



Step 5: Painting the Red and Orange

Using Crimson Red, paint in the eyes of the frog. Then paint in the Orange of the feet, with a mix of 1 part Orange and 1 part Crimson Red.



Step 6: Painting the Blue

After the Greens are dry, block in the Blue of the legs with Cerulean Blue. You can add Ultramarine in areas of shadow, but try not to rework wet paint as it will look rough.



Step 7: Painting the Purple Background and the Yellow

Finally paint the background with Violet, then use Lemon Yellow to paint the bottom lip and belly of the Frog.

And there you have it, a Tree Frog in Glass Paint. You can enhance your homewares with so many designs, so try it out and until next time...

Keep on Painting

